



MATCHPOOLS **MINI**

Purchase. Let in. Dive in.

BAC
pool systems

BEHNCKE
GmbH

fluvo
innovative schwimmbadtechnik

MATCHPOOLS 23 / 28 / 28 XL

Small garden - great joy. Our MATCHPOOLS MINI concept fulfills the dream of your own pool even in the smallest places.

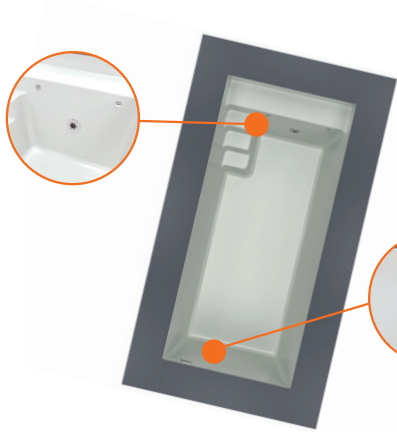


Image: MATCHPOOLS 23
 Inside dimensions: 2,35 x 5,20 x 1,40 m
 External dimensions: 2,47 x 5,30 x 1,44 m
 Colour: Light grey, Weight: approx. 400 kg

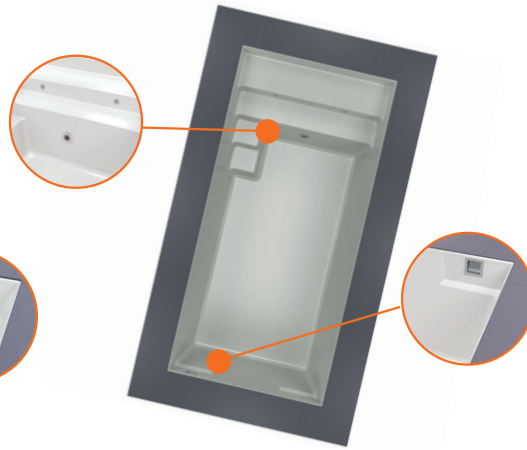


Image: MATCHPOOLS 28
 Inside dimensions: 2,85 x 6,00 x 1,40 m
 External dimensions: 2,95 x 6,10 x 1,44 m
 Colour: Light grey, Weight: approx. 500 kg

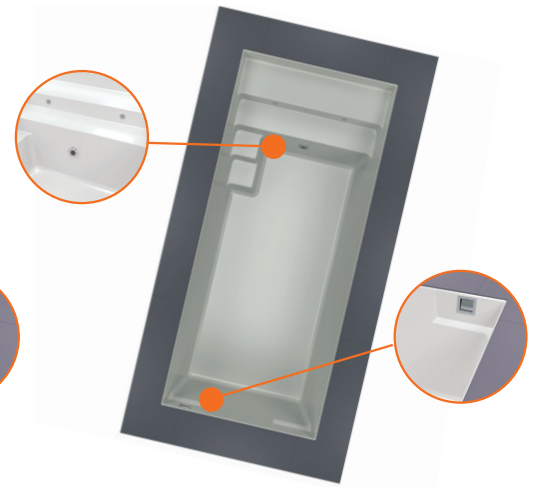
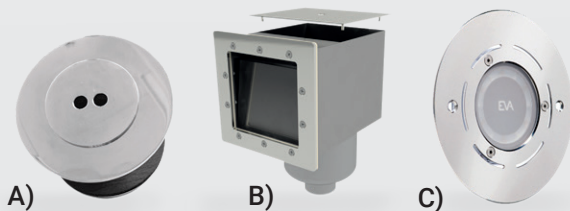


Image: MATCHPOOLS 28 XL
 Inside dimensions: 2,85 x 7,40 x 1,40 m
 External dimensions: 2,95 x 7,50 x 1,44 m
 Colour: Light grey, Weight: approx. 650 kg

MATCHPOOLS MINI INBUILT PARTS PACKAGE

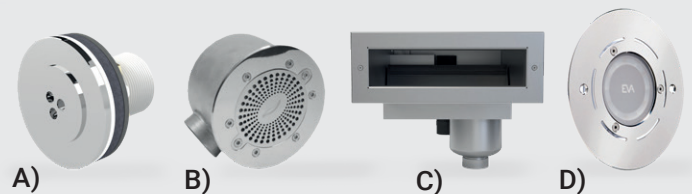
The inbuilt parts package is installed at the factory!

INSTALLATION PARTS PACKAGE MATCH MINI (installed at the factory!)



- A) STAINLESS STEEL INLET NOZZLE 2x
- B) SKIMMER B075 1x
- C) EVA RX (Eco) 6500, white 1x

INSTALLATION PARTS PACKAGE MATCH STYLE (installed at the factory!)



- A) STAINLESS STEEL INLET NOZZLE 2x
- B) FLOOR DRAIN HAIR CATCHING SAFE 1x
- C) SKIMMER B400 Slim 1x
- D) EVA RX (Eco) 6500, white 1x

OPTIONAL ACCESSORY PRODUCTS



RONDO V4A JET SYSTEM 1,5 kW (Installation kit + jet system + self-priming pump)

Everything from leisurely paddling to an energetic, freestyle workout. The counter current system makes all of this possible, without having to turn around at the end of the pool. Two rotary handles allow you to adjust the current flow and the air admixture individually to suit your personal massage or fitness experience.



HEAT PUMP BASIC 90, 230 V

The solid technology integrated in the high-quality stainless steel housing ensures a comfortable extension of the pool season from spring to autumn. The integrated digital control system enables fully automatic heating and cooling of your pool. P1 = 1.5 kW to 30 m³ pool volume

Material properties

The pool bodies of these prefabricated swimming pools consist of seven layers of material, each of those them have a special function.

Colour-fast, easy care, skin-friendly

- 1. Duracolor 90 HD. The synthetic, highly dense colour substrate layer for highly stressed pool surfaces
- 2. Fine cell layer to reduce fibre print on the high-gloss surface. Makes the pool noticeably smoother

Resistance to osmosis due to epoxy acrylate

- Robust carrier layer made of high-strength interwoven fibre matting
- Chemical resistant fibreglass

- Ceramic coupling layer to form a homogeneous and permanent structure. All layers are embedded in highly durable epoxy acrylate

Insulation saves energy and protects your budget

- Insulating layer made of rigid polyurethane foam
- k-value 0.3 W / m² *k (for comparison: triple insulating glass = 0.45 W / m² *k)

Stabilization

- Backup material as "last layer" and finishing layer
- Integrated steel rectangular tubes and a standing step
- Provides maximum stability



The material properties

The hard foam insulation in the floor is made of a complex epoxy-acrylate laminate with 7 layers and ceramic cores as well as steel inserts. **There are only 6 layers in the side walls (without foam insulation!).** This construction makes the MATCHPOOLS extremely dimensionally stable. In the backfill area, all mounting parts are made of sturdy stainless steel.



SERVICE SHAFT Smart 4/6

The compact and high-quality GRP service shaft enables the quick and easy installation of the most important technology components for every kind of mini pool up to a volume of approx. 20 m³. All components such as filters, pumps, valves and measurement and control technology are delivered fully assembled,

thus ensuring easy final assembly.

If an optional jet system is installed, this can also be integrated in the service shaft.

SERVICE SHAFT

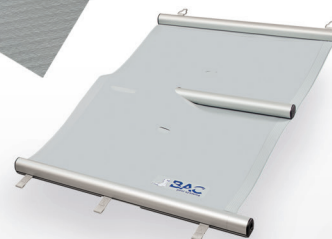


COVER (Isola light gray / light blue + Rondalino roll-up device)

Insulating multilayer film Isola (width 2.78 m) with manual Rondalino retractor and sun protection cover. Cover floating on the water, in a three-layer structure.

- Top layer: made of fabric-reinforced PE film
- Middle layer: cross-linked PE foam in pyramid format
- Lower layer: Special film resistant to chemicals and microbes infestation

Caution: The clearance between the pool edge stones must be at least 2.80 m.



ANTI-ROLL COVER (Novatrend light gray with accessories and hand crank 3:1)

This model meets the safety standard NF P 90-308, covers your pool perfectly and thus offers maximum safety for people and animals when properly anchored. The cover lying on the edge of the pool also protects your pool from dirt and heat loss. This allows you to minimize your energy costs. In addition, the amount of water treatment agents can be significantly reduced.

The covers are made of high-quality, fabric-reinforced PVC material, supported by integrated aluminum bars.



Your MATCHPOOLS MINI stores:

**Poolsplace
GmbH & Co. KG**



Am Erlenpark 1, D-77866 Rheinau
Phone: +49 (0) 7853 99996 - 81
Email: info@poolsplace.de
www.poolsplace.de

Continue!

Your distribution partner:

BEHNCKE GmbH



Michael-Haslbeck-Straße 13
D-85640 Putzbrunn / München
Phone: +49 (0) 89 45 69 17 - 0
Email: info@behncke.com
www.matchpools.de

Your MATCHPOOLS MINI partner: